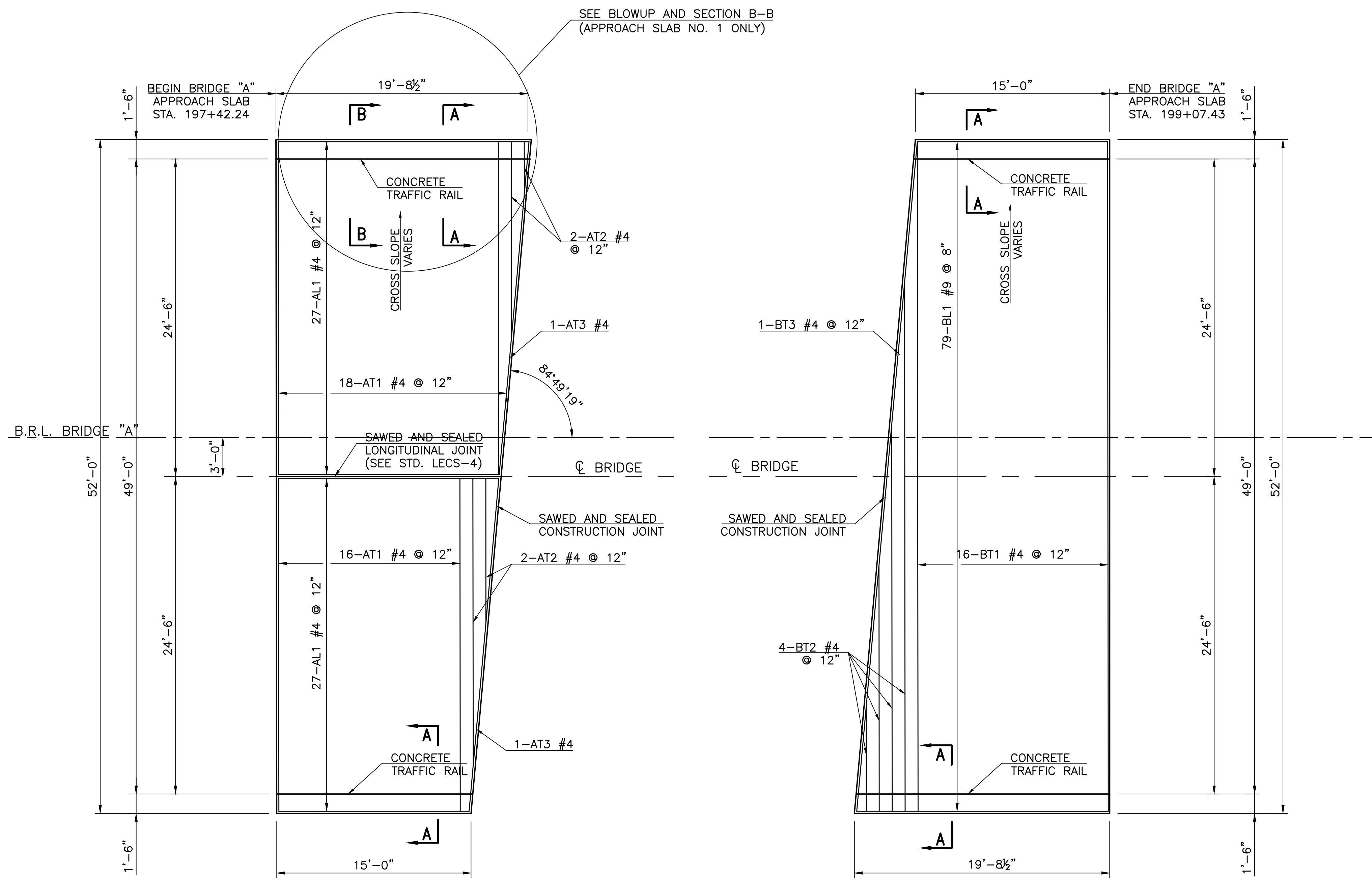


REVISIONS		
REV. NO.	DESCRIPTION	DATE



APPROACH SLAB BAR LIST - BRIDGE A (ONE SHOWN, TWO REQUIRED)

MARK	SIZE	NO.	FORM	LENGTH	VARIABLES
EPOXY COATED REINFORCING					
AL1	#4	54	STR.	17'-0" AVG.	14'-8" TO 19'-4"
AT1	#4	34	STR.	25'-8"	
AT2	#4	4	STR.	9'-3" AVG.	3'-9" TO 14'-9"
AT3	#4	2	STR.	25'-9"	
BL1	#9	79	STR.	17'-0" AVG.	14'-8" TO 19'-4"
BT1	#4	16	STR.	51'-8"	
BT2	#4	4	STR.	24'-2 1/2" AVG.	7'-8" TO 40'-9"
BT3	#4	1	STR.	51'-10"	
FS2	#5	31 (REF ODOT STD. FSHP-42-2)	BNT.	7'-4"	
FS6	#5	10	BNT.	7'-6 1/2"	

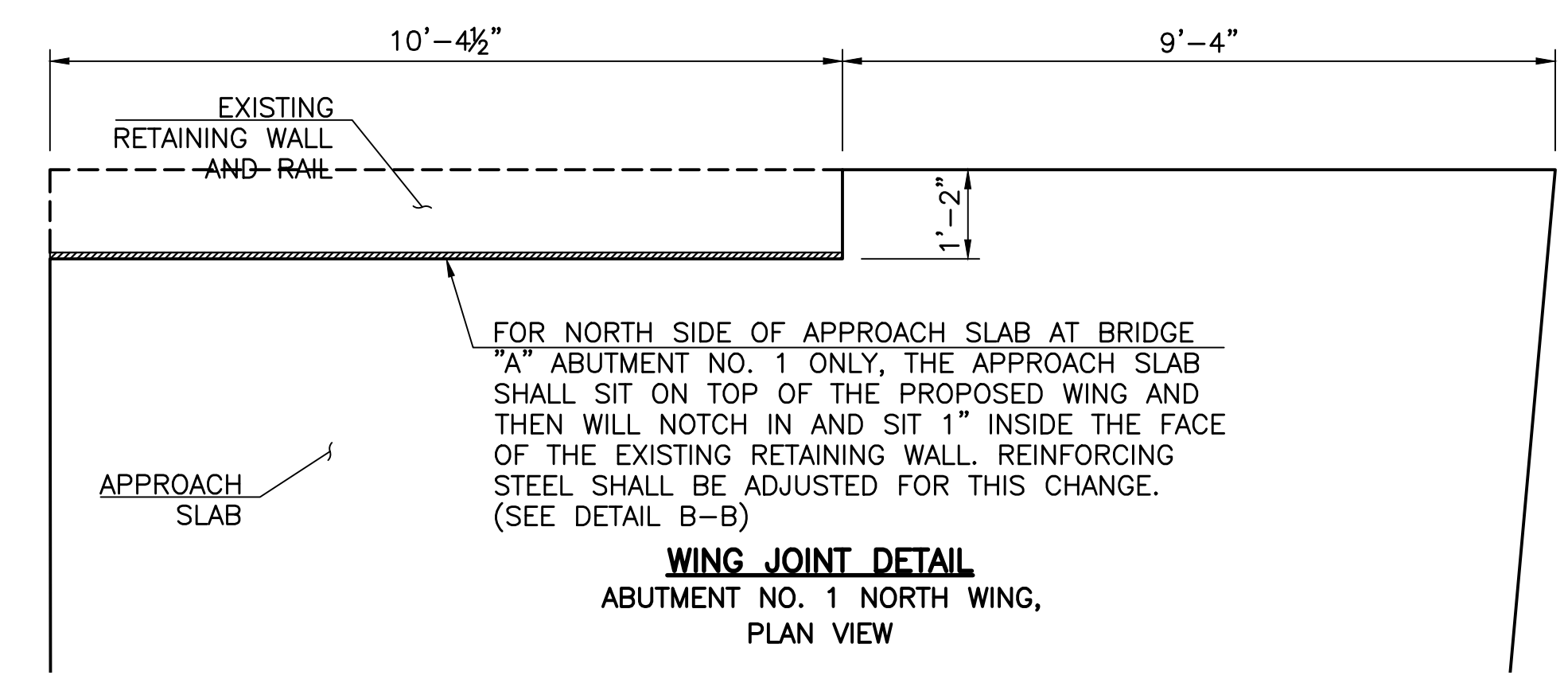
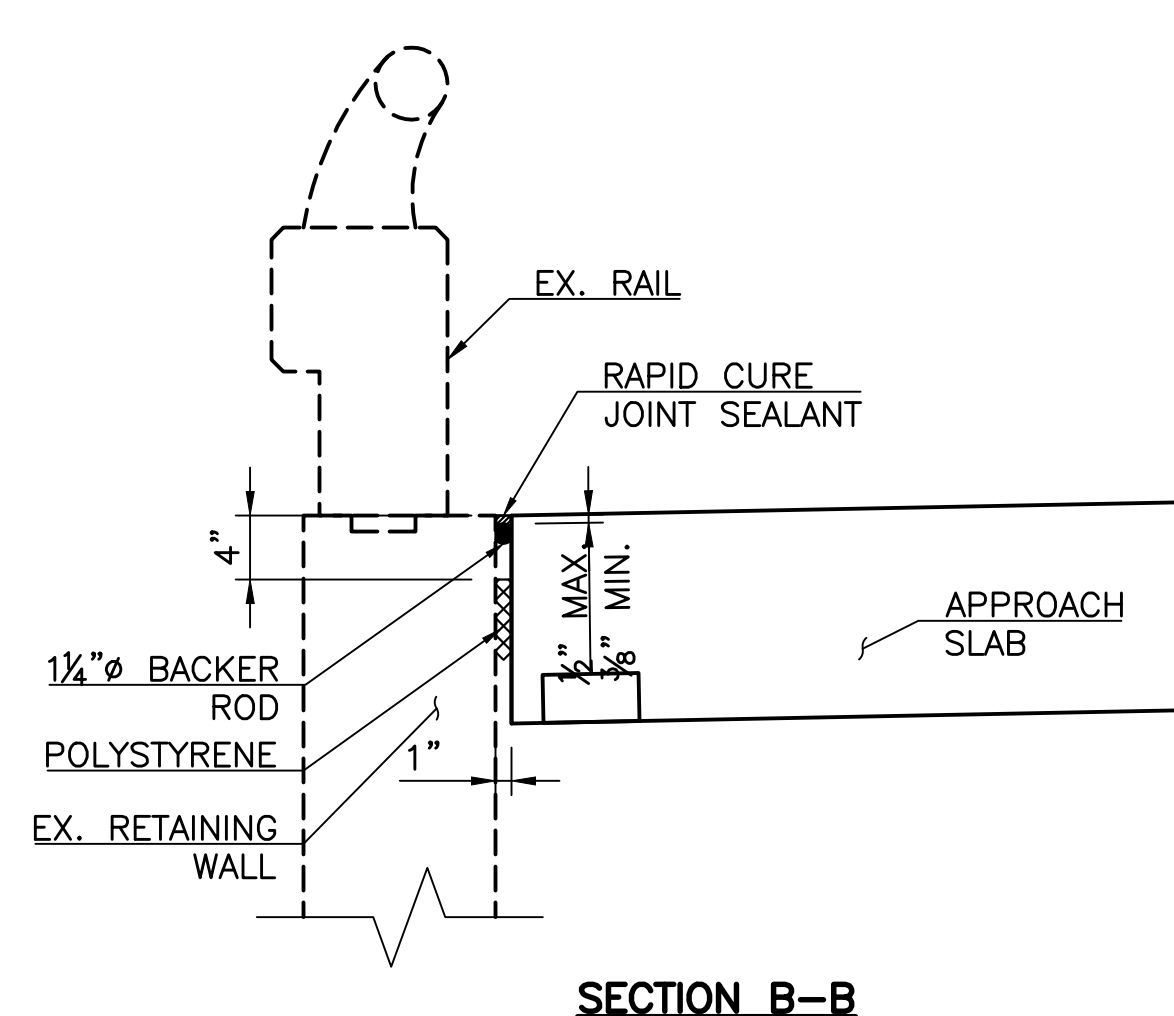
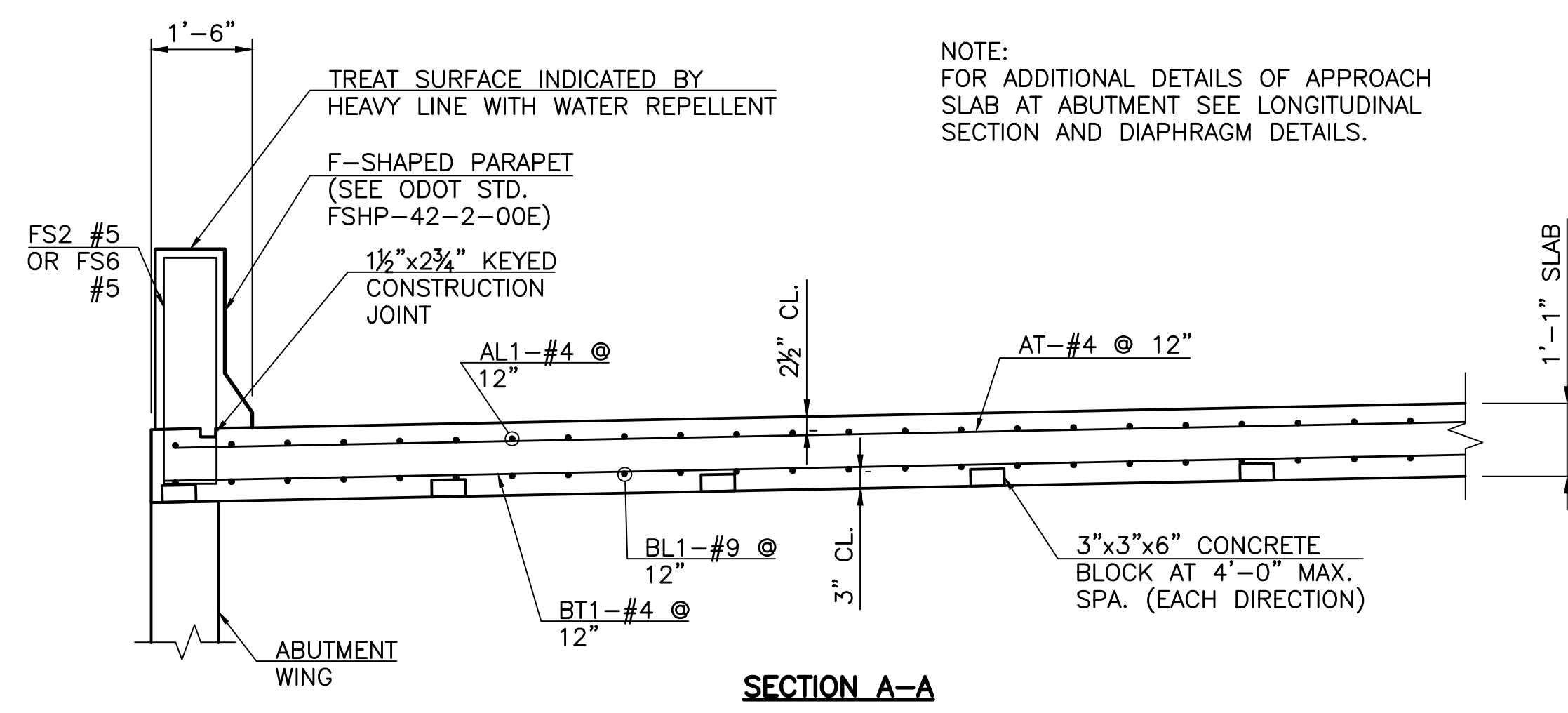
① 2 SETS OF 2

QUANTITIES-APPROACH SLABS - BRIDGE A

ITEM	UNIT	ABUT. NO. 1	ABUT. NO. 2	TOTAL
APPROACH SLAB	S.Y.	99.0	100.3	199.3
SAW-CUT GROOVING	S.Y.	94.5	94.5	189.0
CONCRETE RAIL (STD. FSHP-42-2)	L.F.	24.4	34.7	59.1
WATER REPELLENT (VISUALLY INSPECTED)	S.Y.	11.9	17.0	28.9

APPROACH SLAB NO. 1
(TOP REINFORCING SHOWN)

APPROACH SLAB NO. 2
(BOTTOM REINFORCING SHOWN)



NOTE:
FOR ADDITIONAL DETAILS OF APPROACH
SLAB AT ABUTMENT SEE LONGITUDINAL
SECTION AND DIAPHRAGM DETAILS.

FOR NORTH SIDE OF APPROACH SLAB AT BRIDGE
"A" ABUTMENT NO. 1 ONLY, THE APPROACH SLAB
SHALL SIT ON TOP OF THE PROPOSED WING AND
THEN WILL NOTCH IN AND SIT 1" INSIDE THE FACE
OF THE EXISTING RETAINING WALL. REINFORCING
STEEL SHALL BE ADJUSTED FOR THIS CHANGE.
(SEE DETAIL B-B)

WING JOINT DETAIL
ABUTMENT NO. 1 NORTH WING,
PLAN VIEW

DESIGN	MW	11/16	TULSA COUNTY	US-64 OVER 97TH W. AVE.
DRAWN	SDK	11/16	OKLAHOMA DEPARTMENT OF TRANSPORTATION	
CHECKED	HRA	11/16	DETAILS OF APPROACH SLABS	
APPROVED			(BRIDGE "A")	
WALTER P MOORE			STATE JOB NO. 28884(04)	SHEET NO. 54

V:\MISC\2012\2003-07_0001_EC-1414_US-64_10m_3\CD\03\STA-55-412-10001-07-APPROACH\05.dwg, Job: 12, 2017 - 2:28pm, wpmk